



**India Meteorological Department
(Ministry of Earth Sciences)**

NATIONAL BULLETIN NO. 19 (BOB/07/2024)

TIME OF ISSUE: 0230 HOURS IST

DATED: 29.11.2024

FROM: INDIA METEOROLOGICAL DEPARTMENT (FAX NO. 24643965/24699216/24623220)

TO: CONTROL ROOM, NDM, MINISTRY OF HOME AFFAIRS (FAX.NO. 23093750)

CONTROL ROOM NDMA (FAX.NO. 26701729)

CABINET SECRETARIAT (FAX.NO.23012284, 23018638)

PS TO HON'BLE MINISTER FOR S & T AND EARTH SCIENCES (FAX NO.23316745)

SECRETARY, MOES (FAX NO. 24629777)

H.Q. (INTEGRATED DEFENCE STAFF AND CDS) (FAX NO. 23005137/23005147)

DIRECTOR GENERAL, DOORDARSHAN (23385843)

DIRECTOR GENERAL, AIR (23421105, 23421219)

PIB MOES (FAX NO. 23389042)

UNI (FAX NO. 23355841)

D.G. NATIONAL DISASTER RESPONSE FORCE (NDRF) (FAX NO. 26105912, 2436 3260)

DIRECTOR, PUNCTUALITY, INDIAN RAILWAYS (FAX NO. 23388503)

CHIEF SECRETARY, ANDAMAN & NICOBAR ISLANDS (FAX NO. 03192-232656)

CHIEF SECRETARY, TAMIL NADU (FAX NO. 044-25672304)

CHIEF SECRETARY, ANDHRA PRADESH (FAX NO. 0863-2441029)

CHIEF SECRETARY, PUDUCHERRY (FAX NO. 0413-2334145)

CHIEF SECRETARY, ODISHA (FAX NO. 0674-2536660)

Sub: Deep depression over Southwest Bay of Bengal

The Deep Depression over Southwest Bay of Bengal moved north-northeastwards with a speed of 9 Kmph during past 6 hours and lay centred at 2330 hours IST of yesterday, the 28th November 2024 over the same region near latitude 10.1°N and longitude 82.8°E, about 240 km northeast of Trincomalee, 330 km east-southeast of Nagappattinam, 390 km east-southeast of Puducherry and 430 km southeast of Chennai.

It is very likely to move northwestwards and maintain its intensity of deep depression till 29th November. Continuing to move northwestwards, it is very likely to cross north Tamil Nadu-Puducherry coasts between Karaikal and Mahabalipuram close to Puducherry around morning of 30th November as a depression with a wind speed of 45-55 kmph gusting to 65 kmph.

The system is being continuously monitored.

Forecast track and intensity are given in the following table:

Date/ Time (IST)	Position (Lat. °N/ long. °E)	Maximum sustained surface wind speed (Kmph)	Category of cyclonic disturbance
28.11.24/2330	10.1/82.8	55-65 gusting to 75	Deep Depression
29.11.24/0530	10.5/82.5	55-65 gusting to 75	Deep Depression
29.11.24/1130	11.0/81.9	55-65 gusting to 75	Deep Depression
29.11.24/1730	11.3/81.3	55-65 gusting to 75	Deep Depression
29.11.24/2330	11.6/80.6	50-60 gusting to 70	Deep Depression
30.11.24/1130	11.9/79.7	45-55 gusting to 65	Depression
30.11.24/2330	12.2/78.7	40-50 gusting to 60	Well Marked Low Pressure Area

Warnings:

(i) Rainfall Warning:

Tamil Nadu & Puducherry: Light to moderate rainfall at many places with Heavy rainfall at isolated places is very likely over North coastal Tamil Nadu-Puducherry on 28th November and heavy to very heavy rainfall at a few places and extremely heavy rainfall at isolated places is likely over north Tamil Nadu – Puducherry on 29th and isolated heavy to very heavy rainfall on 30th November & 1st December.

Coastal Andhra Pradesh: Light to moderate rainfall at many places with heavy to very heavy rainfall at isolated places is likely over south coastal Andhra Pradesh on 29th to 30th November; extremely heavy rainfall at isolated places on 29th November.

Royalaseema: Light to moderate rainfall at many places with heavy to very heavy rainfall at isolated places is likely on 29th & 30th November; extremely heavy rainfall at isolated places on 29th November.

South interior Karnataka: Light to moderate rainfall at many places with isolated heavy rainfall at isolated places is likely on 29th, heavy to very heavy rainfall at isolated places on 30th November and 1st December and heavy rainfall at isolated places on 2nd December.

Kerala: Light to moderate rainfall at many places with heavy to very heavy rainfall at isolated places on 30th November & 1st December.

(ii) Wind warning:

- **Southwest Bay of Bengal:** Squally wind speed reaching 55-65 kmph gusting to 75 kmph is prevailing over southwest Bay of Bengal and likely to continue till evening of 29th November. Thereafter, It is likely to decrease becoming 45-55 kmph gusting to 65 kmph by noon of 30th November. It is likely decrease thereafter.
- **Adjoining areas of westcentral Bay of Bengal:** Squally wind speed reaching 40-50 kmph gusting to 60 kmph is likely to prevail over adjoining areas of westcentral Bay of Bengal till morning of 30th November. It is likely decrease thereafter.
- **Along & off North Tamil Nadu – Puducherry and adjoining South Andhra Pradesh coasts:** Squally wind speed reaching 45-55 kmph gusting to 65 kmph is likely to prevail along & off **North Tamil Nadu - Puducherry and adjoining South Andhra Pradesh coasts** till noon of 30th November. It is likely decrease thereafter.
- **Along & off East Sri Lanka coasts:** Squally wind speed reaching 50-60 kmph gusting to 70 kmph is very likely to prevail **Along & off East Sri Lanka coasts** till 29th morning. It would decrease gradually becoming 40-50 kmph gusting to 60 kmph by 30th November morning.
- **Along & off South Tamil Nadu coast and Gulf of Mannar:** Squally wind speed reaching 40-50 kmph gusting to 60 kmph is likely to prevail till 30th morning and gradually decrease thereafter.

(iii) Sea condition:

- Rough to very Rough Sea conditions is very likely over southwest Bay of Bengal adjoining areas of westcentral Bay of Bengal, Gulf of Mannar and along & off Tamil Nadu-Puducherry, South Andhra Pradesh and East Sri Lanka coasts till 29th November, thereafter rough Sea condition till 30th November morning and improve gradually thereafter.

(iv) Fisherman warning:

- Fishermen are advised not venture into southwest Bay of Bengal adjoining areas of westcentral Bay of Bengal, Gulf of Mannar and along & off Tamil Nadu-Puducherry, South Andhra Pradesh and East Sri Lanka coasts till 30th November morning.
- Fishermen out at sea are advised to return to coast.

(v) Impact Expected [over Tamil Nadu – Puducherry, south Andhra Pradesh, south interior Karnataka and Kerala]

- Localized Flooding of roads, water logging in low lying areas.

- Occasional reduction in visibility due to heavy rainfall in some areas.
- Disruption of traffic in major cities due to water logging in roads leading to increased travel time in some areas.
- Minor damage to kutcha roads.
- Damage to horticulture and standing crops in some areas due to inundation.

(vi) Action Suggested

- Fishermen are advised not venture into southwest Bay of Bengal adjoining areas of westcentral Bay of Bengal, Gulf of Mannar and along & off Tamil Nadu-Puducherry, South Andhra Pradesh and East Sri Lanka coasts till 30th November morning.
- Fishermen out at sea are advised to return to coast.
- Check for traffic congestion on your route before leaving for your destination.
- Follow any traffic advisories that are issued in this regard.
- Avoid going to areas that face the water logging problems often.
- Special care may be taken for fishing ponds and poultries over coastal areas.
- Avoid staying in vulnerable structure.

(vii) Agromet advisories [over Tamil Nadu – Puducherry and Andhra Pradesh, south interior Karnataka and Kerala]

Provide adequate drainage facilities for the removal of excess water from rice, cotton, sugarcane, turmeric and vegetable fields, coconut and banana orchards. Provide mechanical support to banana plants to prevent lodging.

- Make arrangements to drain out excess water from the standing crop fields and fruit orchards in Kerala and Coastal Andhra Pradesh.
- Harvest the matured crops and keep it in safe place.
- Provide mechanical support to horticultural crops and staking to vegetables.

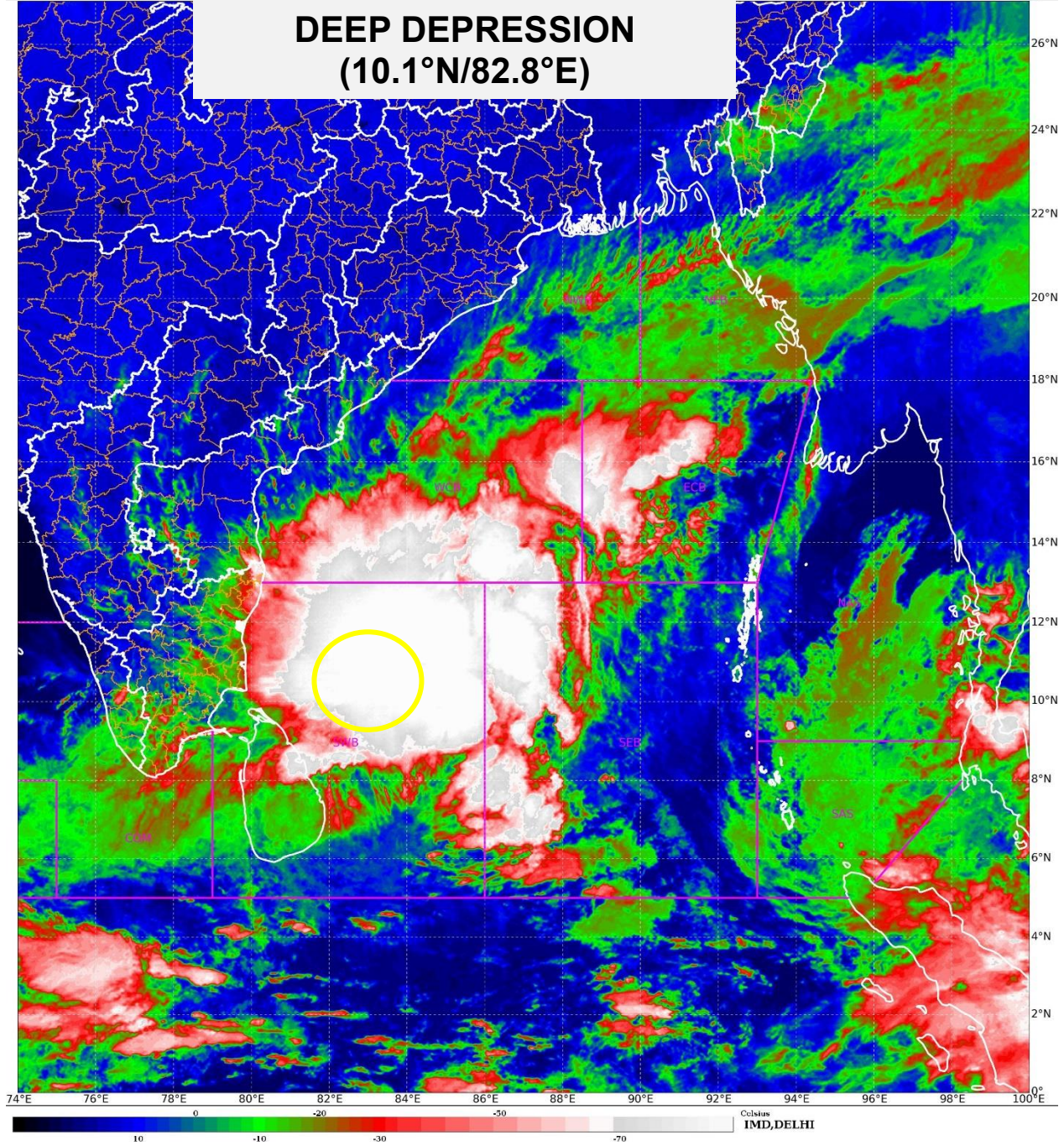
Next bulletin will be issued at 0830 hours IST of 29th November, 2024.

**(Akhil Srivastava)
Scientist D, RSMC, New Delhi**

*Copy to: ACWC Kolkata/ACWC Chennai/CWC Bhubaneswar/MC, Amaravati/MC,
Thiruvananthapuram/CWC, Vishakhapatnam*

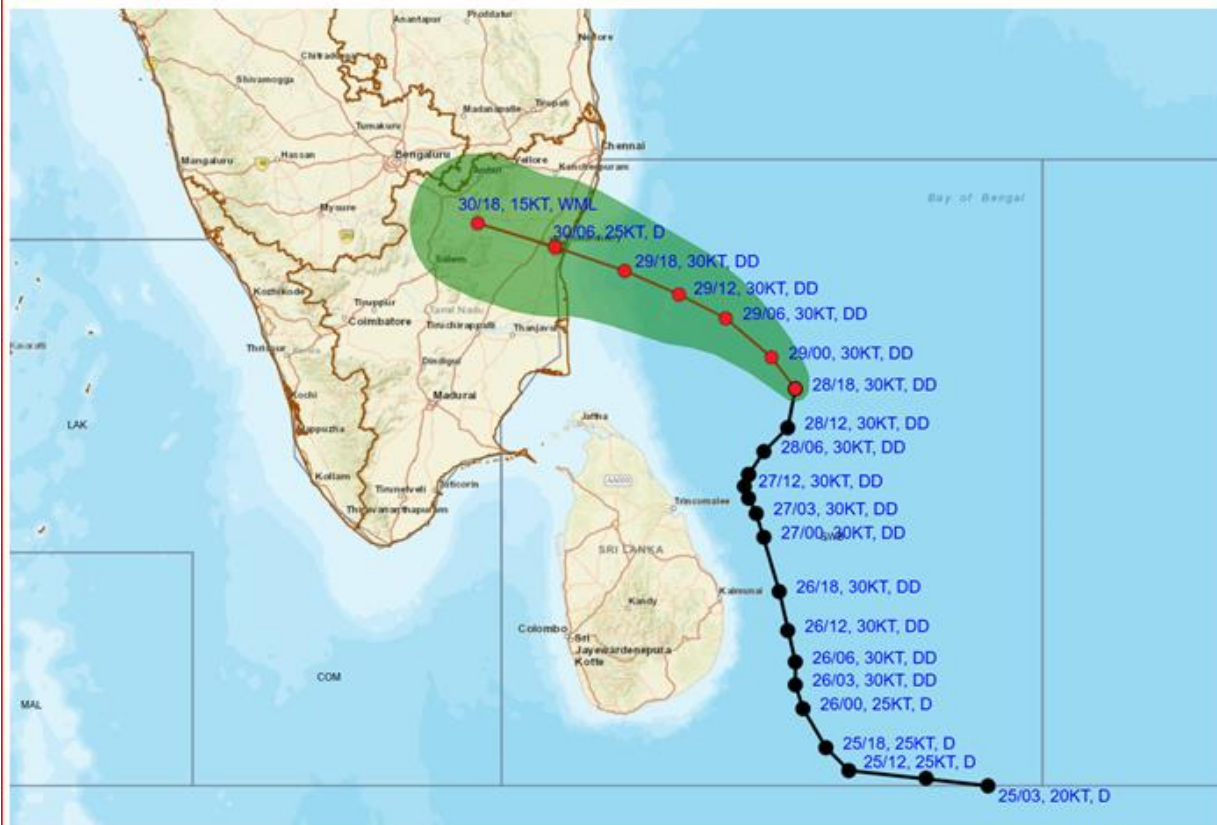


DEEP DEPRESSION (10.1°N/82.8°E)





OBSERVED AND FORECAST TRACK ALONG WITH CONE OF UNCERTAINTY OF DEEP DEPRESSION OVER SOUTHWEST BAY OF BENGAL BASED ON 1800 UTC (2330 HRS. IST) OF 28TH NOVEMBER, 2024



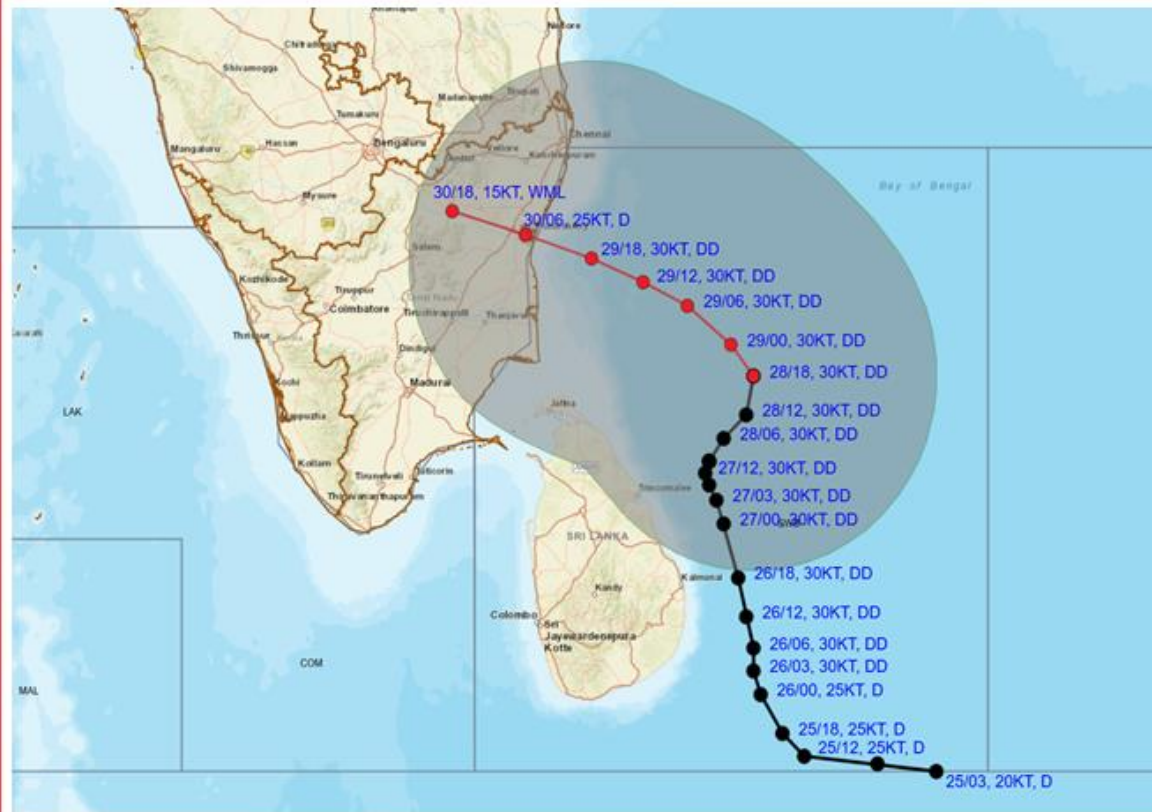
DATE/TIME : IN UTC
IST : UTC + 0530
KT : NAUTICAL MILE S/HOUR = 1.85 KM/HOUR
LPA : LOW PRESSURE AREA
WML : WELL MARKED LOW PRESSURE AREA
D : DEPRESSION (17-27 KT)
DD : DEEP DEPRESSION (28-33 KT)
CS : CYCLONIC STORM (34-47 KT)
SCS : SEVERE CYCLONIC STORM (48-63 KT)
VSCS : VERY SEVERE CYCLONIC STORM (64-89 KT)
ESCS : EXTREMELY SEVERE CYCLONIC STORM (90-119 KT)
SuCS : SUPER CYCLONIC STORM (≥120 KT)

LESS THAN 34 KT
 34-47 KT
 ≥ 48 KT
 OBSERVED TRACK
 FORECAST TRACK
 CONE OF UNCERTAINTY

Forecast	DISTANCE (KM) AND DIRECTION FROM STATIONS				
	TRINCOMALEE	BATTICALOA	NAGAPPATTINAM	PUDUCHERRY	CHENNAI/MINAMBAKKAM
28.11.24/1800	240, NE	290, NNE	330, ESE	390, ESE	430, SE
29.11.24/1800	340, NNW	450, NNW	120, NE	90, ESE	160, SSE
30.11.24/1800	490, NW	600, NNW	200, NW	120, WNW	180, WSW



OBSERVED AND FORECAST TRACK ALONGWITH QUADRANT WIND DISTRIBUTION OF DEEP DEPRESSION OVER SOUTHWEST BAY OF BENGAL BASED ON 1800 UTC (2330 HRS. IST) OF 28TH NOVEMBER, 2024.



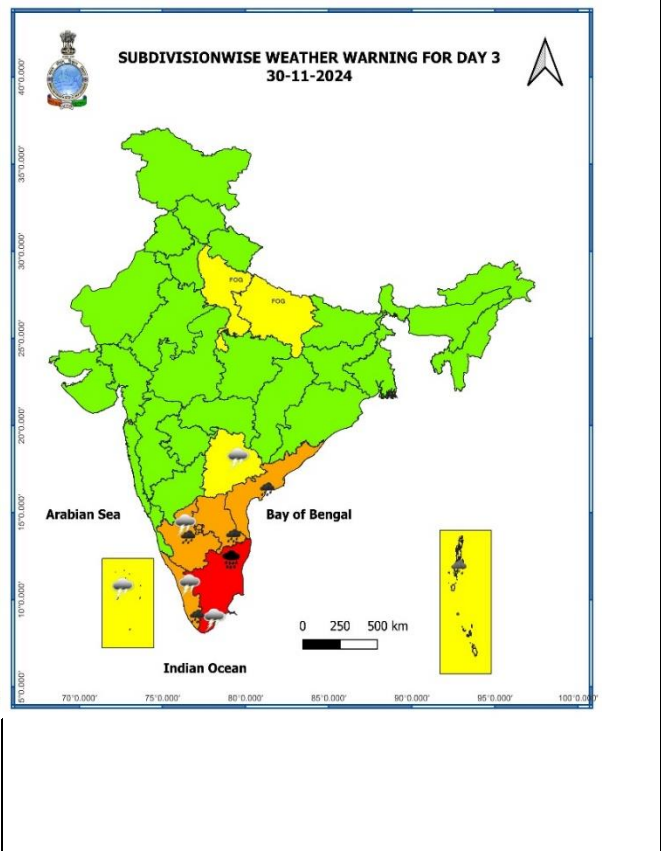
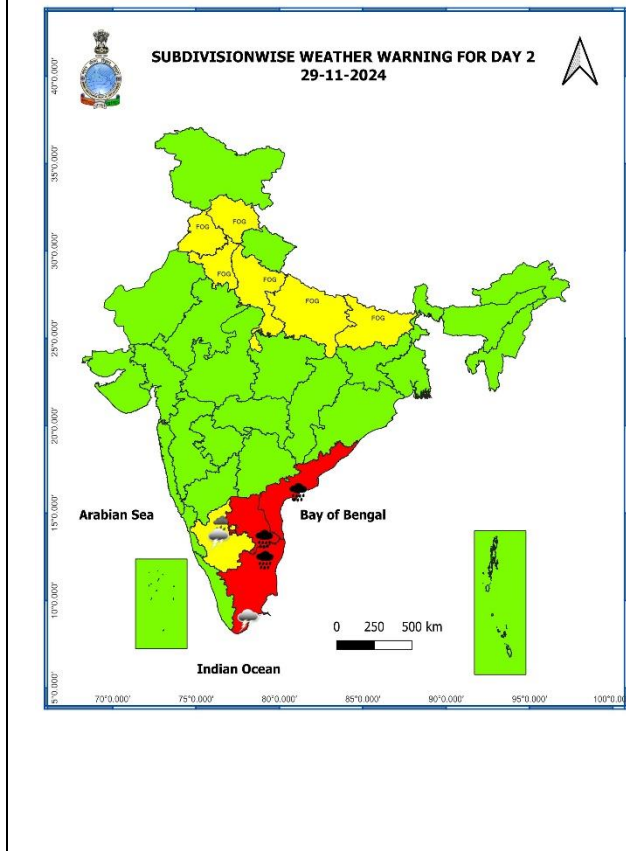
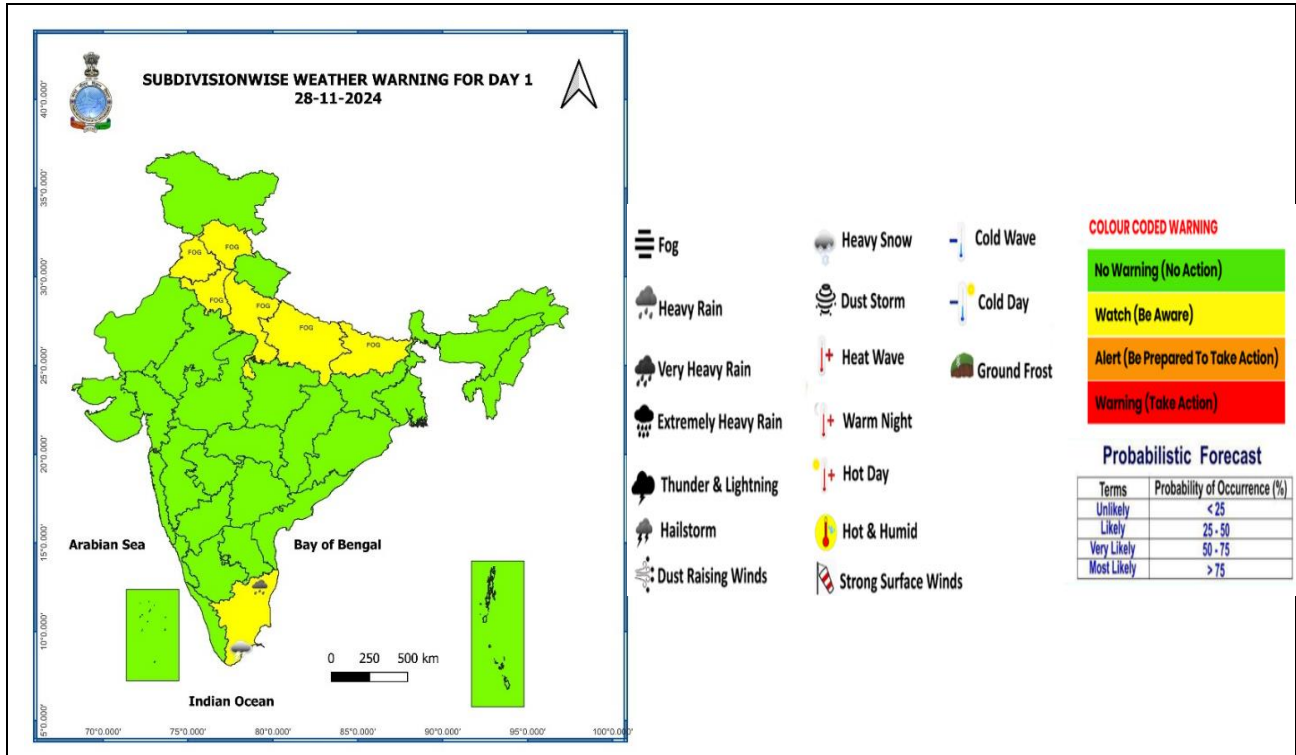
DATE/TIME : IN UTC
 IST : UTC + 0530
 KT : NAUTICAL MILE S/HOUR = 1.85 KM/HOUR
 LPA : LOW PRESSURE AREA
 WML : WELL MARKED LOW PRESSURE AREA
 D : DEPRESSION (17-27 KT)
 DD : DEEP DEPRESSION (28-33 KT)
 CS : CYCLONIC STORM (34-47 KT)
 SCS : SEVERE CYCLONIC STORM (48-63 KT)
 VSCS : VERY SEVERE CYCLONIC STORM (64-89 KT)
 ESCS : EXTREMELY SEVERE CYCLONIC STORM (90-119 KT)
 SuCS : SUPER CYCLONIC STORM (≥120 KT)

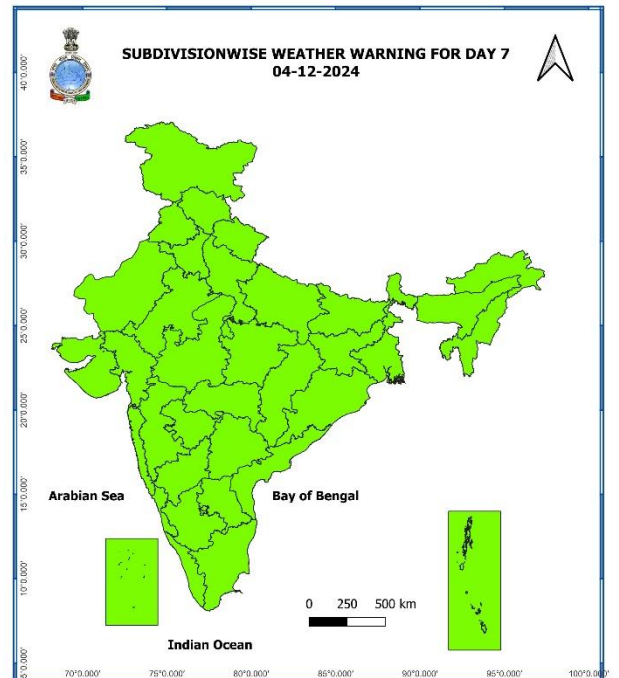
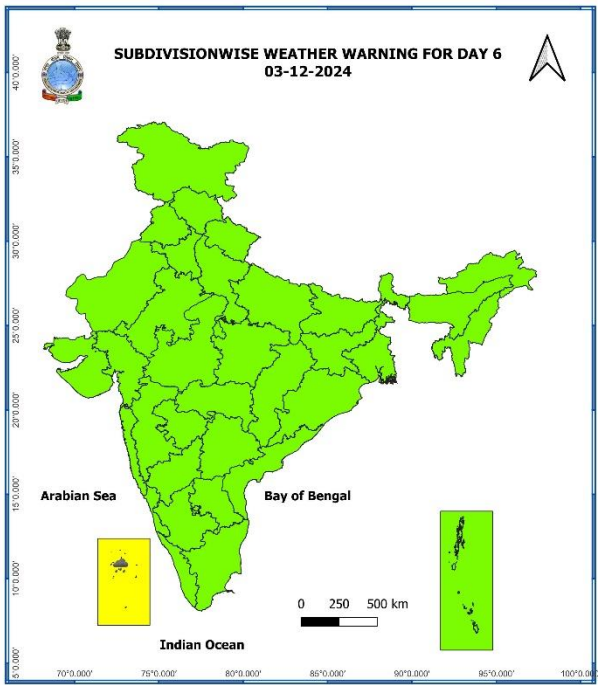
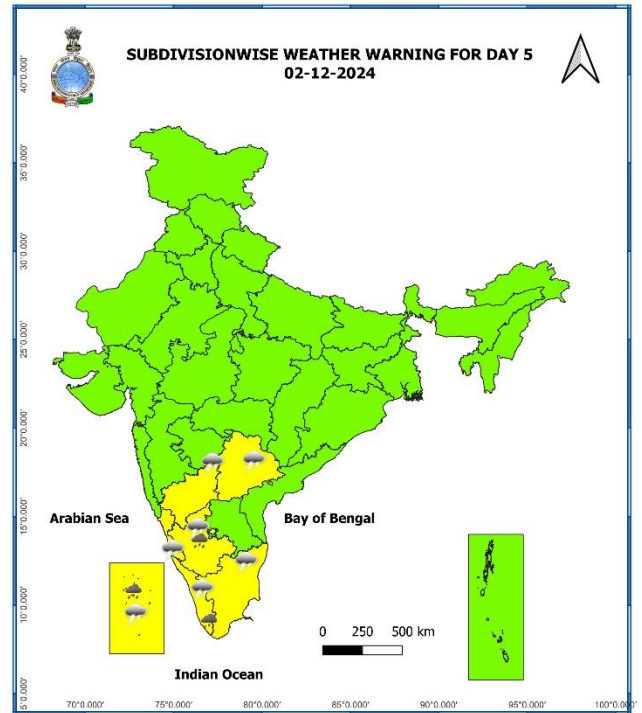
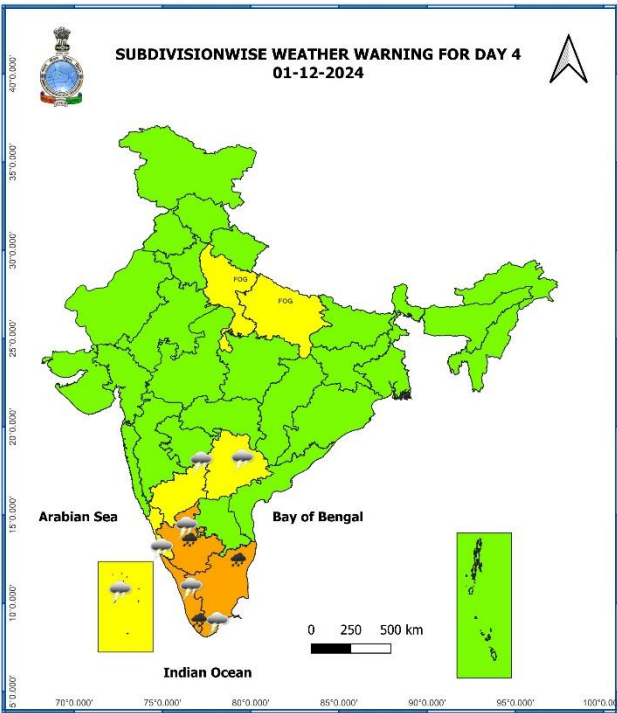
● LESS THAN 34 KT
 ○ 34-47 KT
 ● ≥ 48 KT
 — OBSERVED TRACK
 — FORECAST TRACK
 — CONE OF UNCERTAINTY
 AREA OF MAXIMUM SUSTAINED WIND SPEED:
 ■ 28-33 KT (52-61 KMPH)
 ■ 34-49 KT (62-91 KMPH)
 ■ 50-63 KT (92-117 KMPH)
 ■ ≥ 64 KT (≥118 KMPH)

IMPACT OVER THE SEA

MSW (knot/kmph)	Impact	Action
28-33 (52-61)	Very rough seas	Total suspension of fishing operations
34-49 (62-91)	High to very high seas	Total suspension of fishing operations
50-63 (92-117)	Very high seas	Total suspension of fishing operations
≥ 64 (≥118)	Phenomenal	Total suspension of fishing operations

Weather Warning Graphics





- Action may be taken based on **ORANGE AND RED** COLOUR warnings.
- Vulnerable regions likely urban and hilly areas action may be initiated for heavy rainfall warning.
- As the lead period increases forecast accuracy decreases.

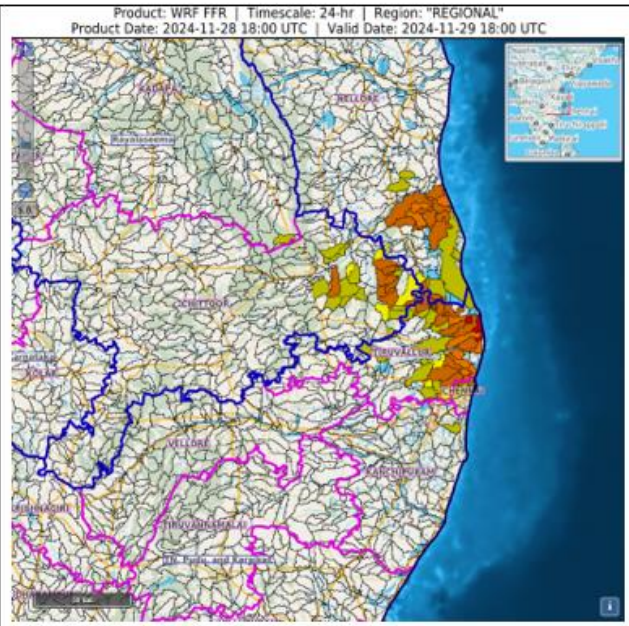
Flash Flood Guidance




24 hours Outlook for the Flash Flood Risk (FFR) till 2330 IST of 29-11-2024:

Low to Moderate flash flood risk likely over few watersheds & neighbourhoods of following Met-subdivision in next 24 hours.

Coastal Andhra Pradesh – Nellore district
Rayalaseema – Chittoor district
Tamil Nadu, Puducherry & Karaikal - Chennai, Kanchipuram and Tiruvallur districts.

Surface runoff/ Inundation may occur at some fully saturated soils & low-lying areas over AoC as shown in map due to expected rainfall occurrence in next 24 hours.



Flash Flood Risk	
	High Risk (Take Action)
	Moderate Risk (Be Prepared)
	Low Risk (Be Updated)

Fishermen Warning Graphics

